

**RADIUM**

**100W-AC-33,200L**

100W AC powered flood light 33200 Lumens

**RADIUM** Commercial & Industrial LED High Bay & Stadium Lights

33,200 Lumens  
332lm/W

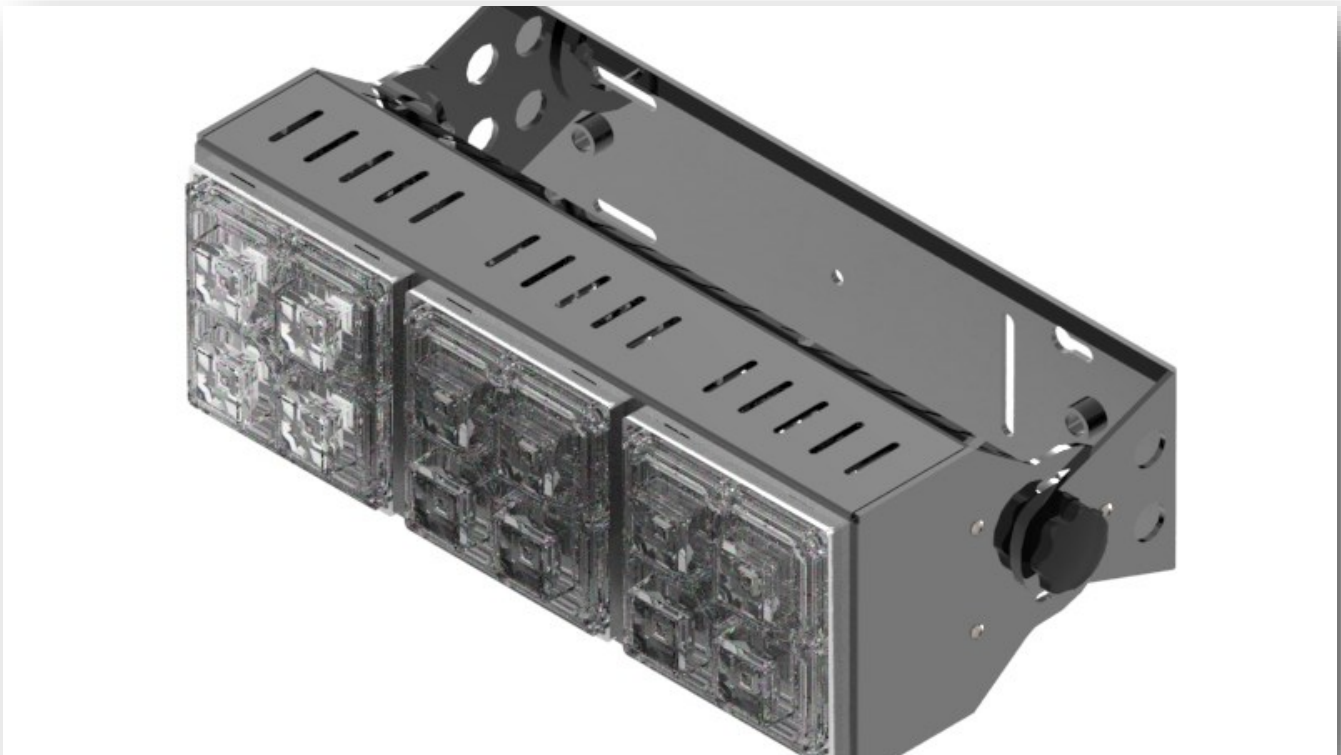
LED Replacement for 200W/300W/400W Metal  
Halide High bay fittings

Suitable for: Sport Arenas, Gymnasiums, Tennis  
Courts, Warehouses any Very large Areas

12 X Next Generation LED's

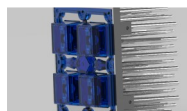
Surface Mount and Wire Guard

Customised LENSES available



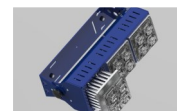
**MECHANICAL**

Adjustable LED Flood Light.  
With Different Optic Lenses.  
Suitable for very large areas like: Stadium  
Lights, Indoor Arenas, Gymnasiums,  
Warehouses, Garages, Manufacturing  
facilities, Aircraft Hangers, Retail stores,  
Super Stores & Tennis Courts.  
Fitting with different LENS options



**LED CONFIGURATION**

SEOUL SZ9  
2x2 SEOUL SZ9 Extreme High Power CHIPS  
Nominal CCT/Color 5650K Cool White  
Typical CRI 70  
Typical Luminous Flux @1400mA  
1330lm  
Extreme Cooling Patented



**AC POWER**

Powered by AC Single Phase.  
Power Factor Greater than 0.98

**RADIUM**

**100W-AC-33,200L**

**100W AC powered flood light 33200 Lumens**

**RADIUM** Commercial & Industrial LED High Bay & Stadium Lights

**Designed System Performance**



Comparable to 200W—400W Metal Halide replacement LED solution	33,200 (LUMENS)
LED Driver	Meanwell
Supply Volts	100-300VAC
Power Factor	Greater than 0.98
Power Consumption	100W
IP Rating	IP67
NEXT generation LED's	SEOUL SZ9
Quantity	12 x SEOUL SZ9 High Power CHIPS
Nominal CCT/Colour	5650K Cool White
Typical CRI	70
Typical Luminous Flux (lm) @350mA Forward Current +_1W	332lm per Watt
Cooling Multi Contact Star Extruded ALUMINIUM	Machined Profile
Lens Type Used	Numerous Lenses Available



IS 15885(Part 2/Sec13)  
  
 R-41027766  
 (for XLG-150I type only)



Note.15  
 (Except for Blank type)

  
 (Except for L type)



**LVLE SELV**  
 (For 24V only)

**IP67**  
 (Except for L type)



**UL**  
 Type HL



**UL**  
 E320521  
 (for 12,24 only)



Note.12